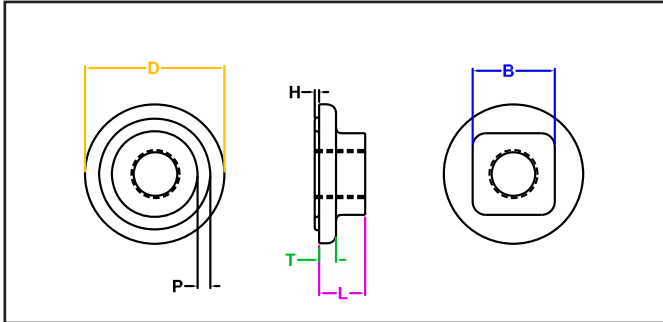


# JHP FASTENERS, INC

## FLANGE WELD NUT

### SERIES

#### JPSF INCH STEEL / PLAIN



**JPSF Series - Flange Weld Nut with a square body and ring projection used in heavy duty applications. Made from a high-welding quality low carbon steel.**

Part Number	Thread Size	L Length Overall ±0.010	B Body Diameter +0.005/- 0.010(SQ.)	Flange		Projection	
				D Diameter +0.018/-0.013	T Thickness ±0.005	P Width	H Height ±0.002
SF 2706	5/16-18	0.344	0.620	1.060	0.125	0.072	0.031
SF 3306	3/8-16	0.344	0.620	1.060	0.125	0.072	0.031
SF 4408	1/2-13	0.500	0.620	1.060	0.125	0.094	0.042

All Dimensions are in Inches

JHP Fasteners, Inc. 610 Maryland NE - Suite B Grand Rapids, MI 49505	Drawing No <b>JPSF</b>	P - 800.783.0910 P - 616.913.0060 F - 616.913.0085
Scale NTS	Revision	Drawn by: M McCormick