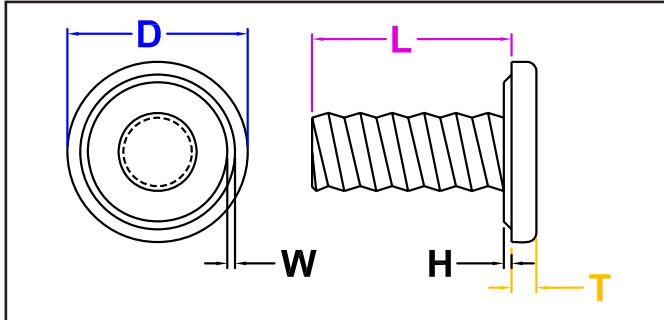


FLANGE WELD STUD

SERIES

JPRW INCH STEEL / PLAIN



JPRW Series - A Flange Weld Stud capable of a hermetic seal due to the ring projection, Designed for through the hole installation. Made from a high-welding quality low carbon steel.

Part Number	Thread Size	L Length Under Head +0.000/-0.030 *(+0.000/-0.060)	Head		Projection	
			D Diameter ± 0.015	T Thickness ± 0.005	W Width	H Height ± 0.003
JPRW 1106	#6-32	0.375	0.313	0.047	0.025	0.013
JPRW 1406	#8-32	0.375	0.375	0.063	0.031	0.016
JPRW 1408	#8-32	0.500	0.375	0.063	0.031	0.016
JPRW 1416	#8-32	1.000*	0.375	0.063	0.031	0.016
JPRW 1608	#10-32	0.500	0.438	0.063	0.035	0.018
JPRW 1620	#10-32	1.250*	0.438	0.063	0.035	0.018
JPRW 2108	1/4-20	0.500	0.563	0.078	0.048	0.024
JPRW 2110	1/4-20	0.625	0.563	0.078	0.048	0.024
JPRW 2112	1/4-20	0.750	0.563	0.078	0.048	0.024
JPRW 2114	1/4-20	0.875	0.563	0.078	0.048	0.024
JPRW 2116	1/4-20	1.000*	0.563	0.078	0.048	0.024
JPRW 2120	1/4-20	1.250*	0.563	0.078	0.048	0.024
JPRW 2710	5/16-18	0.625	0.740	0.094	0.060	0.030
JPRW 2712	5/16-18	0.750	0.740	0.094	0.060	0.030
JPRW 2716	5/16-18	1.000*	0.740	0.094	0.060	0.030
JPRW 2720	5/16-18	1.250*	0.740	0.094	0.060	0.030
JPRW 2732	5/16-18	2.000*	0.740	0.094	0.060	0.030
JPRW 3312	3/8-16	0.750	0.865	0.109	0.068	0.034
JPRW 3316	3/8-16	1.000*	0.865	0.109	0.068	0.034
JPRW 3320	3/8-16	1.250*	0.865	0.109	0.068	0.034

All Dimensions are in Inches

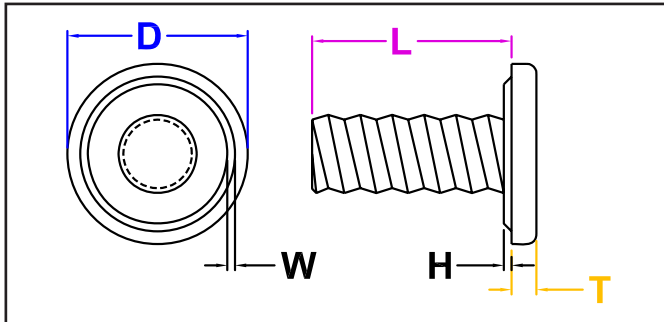
JHP Fasteners, Inc. 610 Maryland NE - Suite B Grand Rapids, MI 49505	Drawing No JPRW	P - 800.783.0910 P - 616.913.0060 F - 616.913.0085
Scale NTS	Revision	Drawn by: M McCormick

JHP FASTENERS, INC

FLANGE WELD STUD

SERIES

JPRWZ INCH STAINLESS STEEL/PLAIN



JPRWZ Series - A Flange Weld Stud capable of a hermetic seal due to the ring projection, Designed for through the hole installation. Made from 18-8 stainless steel.

Part Number	Thread Size	L Length Under Head +0.000/-0.030 *(+0.000/-0.060)	Head		Projection	
			D Diameter ± 0.015	T Thickness ± 0.005	W Width	H Height ± 0.003
JPRWZ 1106	#6-32	0.375	0.313	0.047	0.025	0.013
JPRWZ 1406	#8-32	0.375	0.375	0.063	0.031	0.016
JPRWZ 1408	#8-32	0.500	0.375	0.063	0.031	0.016
JPRWZ 1416	#8-32	1.000*	0.375	0.063	0.031	0.016
JPRWZ 1608	#10-32	0.500	0.438	0.063	0.035	0.018
JPRWZ 1610	#10-32	0.625	0.438	0.063	0.035	0.018
JPRWZ 1620	#10-32	1.250*	0.438	0.063	0.035	0.018
JPRWZ 2108	1/4-20	0.500	0.563	0.078	0.048	0.024
JPRWZ 2110	1/4-20	0.625	0.563	0.078	0.048	0.024
JPRWZ 2112	1/4-20	0.750	0.563	0.078	0.048	0.024
JPRWZ 2114	1/4-20	0.875	0.563	0.078	0.048	0.024
JPRWZ 2116	1/4-20	1.000*	0.563	0.078	0.048	0.024
JPRWZ 2120	1/4-20	1.250*	0.563	0.078	0.048	0.024
JPRWZ 2710	5/16-18	0.625	0.740	0.094	0.060	0.030
JPRWZ 2712	5/16-18	0.750	0.740	0.094	0.060	0.030
JPRWZ 2716	5/16-18	1.000*	0.740	0.094	0.060	0.030
JPRWZ 2720	5/16-18	1.250*	0.740	0.094	0.060	0.030
JPRWZ 2732	5/16-18	2.000*	0.740	0.094	0.060	0.030
JPRWZ 3312	3/8-16	0.750	0.865	0.109	0.068	0.034
JPRWZ 3316	3/8-16	1.000*	0.865	0.109	0.068	0.034
JPRWZ 3320	3/8-16	1.250*	0.865	0.109	0.068	0.034

All Dimensions are in Inches

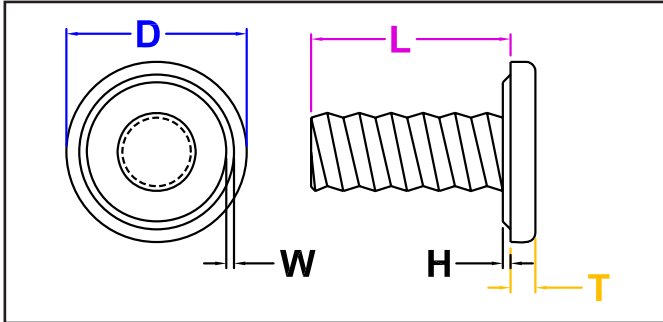
JHP Fasteners, Inc. 610 Maryland NE - Suite B Grand Rapids, MI 49505	Drawing No JPRWZ	P - 800.783.0910 P - 616.913.0060 F - 616.913.0085
Scale NTS	Revision	Drawn by: M McCormick

JHP FASTENERS, INC

FLANGE WELD STUD

SERIES

JPRWM METRIC STEEL / PLAIN



JPRWM Series - A Flange Weld Stud capable of a hermetic seal due to the ring projection, Designed for through the hole installation. Made from a high-welding quality low carbon steel.

Part Number	Thread Size	L Length Under Head +0.00/-0.80	Head		Projection	
			D Diameter ± 0.40	T Thickness ± 0.13	W Width	H Height +0.08/-0.05
JPRWM 03510	M3.5 x 0.6	10.00	8.00	1.20	0.06	0.30
JPRWM 04010	M4 x 0.7	10.00	9.30	1.30	0.08	0.38
JPRWM 04014	M4 x 0.7	14.00	9.30	1.30	0.08	0.38
JPRWM 04025	M4 x 0.7	25.00	9.30	1.30	0.08	0.38
JPRWM 05014	M5 x 0.8	14.00	11.60	1.60	0.09	0.43
JPRWM 05020	M5 x 0.8	20.00	11.60	1.60	0.09	0.43
JPRWM 06014	M6 x 1	14.00	14.00	1.90	1.22	0.61
JPRWM 06016	M6 x 1	16.00	14.00	1.90	1.22	0.61
JPRWM 06020	M6 x 1	20.00	14.00	1.90	1.22	0.61
JPRWM 06025	M6 x 1	25.00	14.00	1.90	1.22	0.61
JPRWM 06035	M6 x 1	35.00	14.00	1.90	1.22	0.61
JPRWM 08016	M8 x 1.25	16.00	18.80	2.50	1.53	0.76
JPRWM 08020	M8 x 1.25	20.00	18.80	2.50	1.53	0.76
JPRWM 08025	M8 x 1.25	25.00	18.80	2.50	1.53	0.76
JPRWM 08035	M8 x 1.25	35.00	18.80	2.50	1.53	0.76
JPRWM 0850	M8 x 1.25	50.00	18.80	2.50	1.53	0.76
JPRWM 10020	M10 x 1.5	20.00	23.00	3.10	1.73	0.86
JPRWM 10025	M10 x 1.5	25.00	23.00	3.10	1.73	0.86
JPRWM 10035	M10 x 1.5	35.00	23.00	3.10	1.73	0.86

All Dimensions are in Millimeters

JHP Fasteners, Inc. 610 Maryland NE - Suite B Grand Rapids, MI 49505	Drawing No JPRWM	P - 800.783.0910 P - 616.913.0060 F - 616.913.0085
Scale NTS	Revision	Drawn by: M McCormick